



**ELEXCO** INC.

*Construction & Utility Services*

# HORIZONTAL DIRECTIONAL DRILLING/PRESSURE DIGGING



In wide-open spaces or crowded urban neighborhoods, exploiting the advantages of Horizontal Directional Drilling (HDD) to its highest and best use can effectively replace traditional methods of plowing and open-cut trenching. Directional drilling or boring is used to navigate installation conditions under roadways, waterways, urban settings, and in environmentally sensitive areas. Capable of directional maneuvering and minimal surface disturbance, HDD is an ideal way to install telecommunication, power, water, sewer and other utilities – private or public.

## Equipment Versatility - Horizontal Directional Drilling

With bored diameters up to 20", depth capabilities of 50', and distances over 1,500', our equipment works consistently in varied conditions. The added advantage of minimal surface restoration makes the application beneficial to business owners during expansions and remodels of facilities.

## Experience Facilitates Options

The impact of soil conditions on the application of boring methods is obtained through experience. Experience leads to the knowledge necessary to apply the proper directional boring methods. Elexco operators know when and where directional boring will provide the benefits our customers seek.

## Equipment Versatility - Pressure Digging

Tough drilling conditions require an auger with pressure and torque! With diameters ranging from 12" to 60" and depths to 22', Elexco's Pressure Digger can auger in the toughest soil conditions. With available torque of 56,000 pounds and a 6 X 6 chassis, Elexco can meet the demands required to access tough job sites. We help you complete the tough jobs timely and productively.

## Training and Experience

Our operators enjoy a reputation for innovative applications of the directional drilling and pressure digging processes. Our operators participate in company training events and obtain hands-on experience in critical, time sensitive field applications. When you select Elexco as your utility contractor, you are purchasing more than the installation — you purchase options.

# WIRELESS

## High Tech and High Demand

Meeting the “rush to market” demands of our wireless provider customers, Elexco offers several options in wireless site services. From complete turn-key site prep and tower installation to tower mapping and site maintenance, Elexco can react quickly and meet compressed construction schedules with our full service offerings.

## Full Service, Self Performed, Less Outsourcing

Development of raw land sites including access roads and utility infrastructure as well as fencing, compounds and site clearing are options that our customers enjoy. In addition to our land development services, our pad/pier and caisson foundation installations are also self-performed without reliance on subcontractors. When specialty trades are required for HVAC and structural steel, our customers can be confident in our subcontractor pre-qualification process. Our subcontracting partners are selected based on quality of work, financial stability, commitment to safety and availability. At Elexco, we control the project so we can provide your desired outcome.



## Minimized Visual Impact

In addition to standard monopole, guyed towers, lattice and roof top installations, Elexco has the experience needed to reduce visual impact on the environment with our specialty installation skills. From utilization of church steeples or flagpoles to mock farm silos and rooftop screen walls, Elexco has the skills, creativity and experience necessary to build tower concealments. Whether it is an urban or rural application, maintaining minimal visual impact that is compatible with the surroundings is a goal to ensure positive community relations.

Approved vendor for SPRINT, AT&T, American Tower, Crown Castle, Alcatel/Lucent, SBA, US Cellular, Cellcom; Multi-state installer; Certified Eupen Cable®, Teracom®, RFS®, Comscope®, Andrews® installers; Complete site maintenance; complete site audit, including tower mapping.



# UTILITIES

Words like “unique,” “complex” and “critical” describe some of the challenging projects we’ve completed while exceeding our customers expectations. We are happy to discuss your challenges and work with you to find the best solution for your project. Whether it is difficult terrain, poor access, bad weather, or a short timeline, we thrive on finding new ways of getting the job done!

Our consultative approach can take your project from inception to construction. We can assist with the design and layout of your project. In addition, our diverse equipment fleet ensures that no project is too big or too complex.

From estimating and design to project delivery and installation, we have a variety of industry specific disciplines to ensure customer satisfaction. Our technicians are trained in all facets of underground installations regardless of product type. In addition, we hold certifications in multiple product lines, providing a thorough understanding of the relationships between product and the installation environment. This information reduces material waste, eliminates improper installations and preserves warranties.

**Duct bank — electrical & communication; Turn-key fiber installation; substation construction; municipal service contracts; full capabilities for underground primary and secondary electrical installation.**

## OTHER CAPABILITIES:

### Capabilities in Rock

Specialty equipment, such as our Rock Wheel and Pressure Digger, allow Elexco to perform our traditional utility services in solid rock. Our Rock Wheel is capable of trenching 8” wide by up to 42” deep, while our Pressure Digger can auger holes 22’ deep and from 12” to 48” in diameter. Maintaining the highest level of installation quality in the most difficult conditions is a requirement at Elexco Inc.

### Site Lighting Contractor

Elexco Inc has the experience and knowledge in-house to meet the requirements of your lighting project. Your project can range from the “functional” lot lighting to the “decorative” streetscape. We’re offering a complete “turn-key” solution that includes design, fixtures, electrical, pole and base installation and underground services.



## SERVICE & SAFETY

Elexco has built its reputation by providing quality services to a variety of industries. Our knowledgeable team is ready to help you tackle the complex challenges specific to your project. We're committed to a philosophy that emphasizes performing quality work, and completing well-managed projects on time to exceed customer expectations.

### Elimination of downtime starts with...

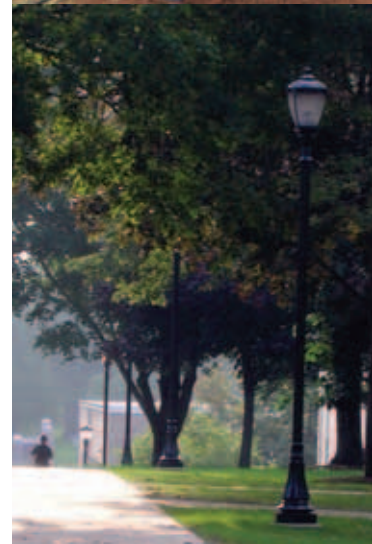
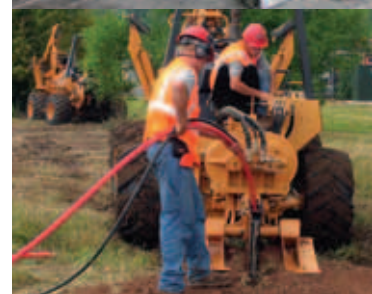
Stringent Equipment Maintenance – When the clock is ticking, one of the worst things that can happen is equipment breakdown. Our equipment maintenance team takes great pride in eliminating downtime on our equipment. This is accomplished through constant measuring of productivity and stringent field and shop maintenance programs. Daily maintenance checklists, in-house equipment training programs, and on-site inspections keep our equipment operating at peak performance. When we are on your site, we are working!

### Safety and equipment training...

Maximizes your investment – It's one thing to own heavy-duty equipment, but yet another thing to understand how to operate it safely and efficiently. The Elexco team gains first-hand knowledge of the most efficient field applications and safety measures during our regularly-scheduled training sessions. *This helps us offer you timely solutions that meet your deadlines quickly and safely.*



For more information, call Elexco today at 920-833-2736 or visit [www.elexcoinc.com](http://www.elexcoinc.com).





*Construction & Utility Services*

423 EAST BRONSON ROAD ■ SEYMOUR, WISCONSIN ■ 54165  
PHONE (920) 833-2736 ■ FAX (920) 833-7468 ■ [www.elexcoinc.com](http://www.elexcoinc.com)